



FIRE-RESISTANT DOOR SYSTEM:

CLASSIC LINE DOORS

ALUFIRE

FIRE-RESISTANT ALUMINIUM
JOINERY GLAZING SYSTEMS

CATALOGUE CARD
VERSION / INT0724



FIRE - RESISTANT
SYSTEMS:

EI15 - EI90



ALUFIRE FIRE-RESISTANT ALUMINIUM DOOR SYSTEM:

CLASSIC LINE DOORS






ADVANTAGES

- Certified as E, EW and EI.
- High precision manufacturing methods ensure reliability.
- Rich hardware option selection.
- 100% compatibility with all Alufire systems.
- Concealed closer & Rollerband hinge options.
- Smoke resistant door (S_a , S_{200}) options are available*.

TECHNICAL HIGHLIGHTS

- Visible profile height: 69 mm
- Noise reduction: up to 42 dB
- Max single-leaf door dimensions:
1420mm x 2750mm
- Max double-leaf door dimensions:
2720mm x 2750mm

TECHNICAL SPECIFICATIONS

| ALUFIRE CLASSIC LINE DOORS | |
|----------------------------|--|
| FIRE-RESISTANCE CLASSES | EI15, EI30, EI45, EI60, EI90 |
| NOISE INSULATION | R _w up to 42 dB |
| MECHANICAL STRENGTH | 4 |
| MECHANICAL DURABILITY | C5 (200 000 opening-closing cycles) |
| SECURITY DOORS CLASS | RC2** |
| MAX DOOR DIMENSIONS | EI15-EI60: Single-leaf doors: 1420 mm x 2750 mm Double-leaf doors: 2720 mm x 2750 mm EI90: Single-leaf doors: 1320 x 2300 mm Double-leaf doors: 2300 x 2300 mm |
| FINISHING | Various finishing options available: 1. Color palettes such as RAL, NCS, DB, IGP 2. Anodization 3. Wood imitation |
| CORROSION RESISTANCE | Class C4 (optionally) |
| ACCESS CONTROL | Both normally open (NO) and normally closed (NC) access control hardware options are available |
| VENTILATION GRILLE OPTION | YES |
| TEST METHOD | European standard: EN 1634-1 |
| GLASS MANUFACTURED BY | <div>AGC PILKINGTON vetrotech SAINT-GOBAIN</div> |

SPOTLIGHT FEATURES



1

COMPATIBILITY

Alufire Classic Line doors alongside partitions Vision Line and Classic Line, create combined aluminium profiles of only 16,5cm due to the full compatibility of all our systems.



3

RELIABILITY

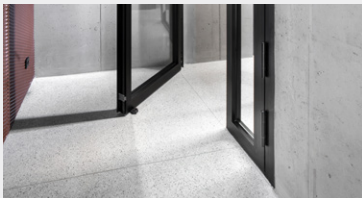
Reliability rate of at least 200 000 opening-closing cycles.



2

CONCEALED CLOSER

Concealed closer is an available option for a cleaner look***.



4

ROLLENBAND HINGES

Rollenband hinges are an available option. They can be painted in any color to achieve the desired styling.

TYPICAL HARDWARE OPTIONS

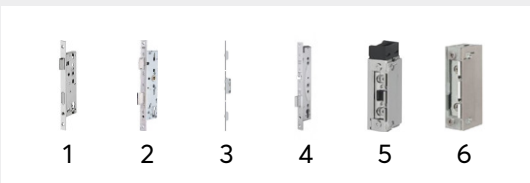
FITTINGS

1. Handle set – Stainless steel
2. Knob set – Stainless steel
3. Pull handle – Stainless steel
4. Panic bar – Silver & black
5. Panic bar – Stainless steel
6. Panic bar – Silver anodized



LOCKS & ELECTRIC STRIKES

1. Standard mortise lock – 1 point
2. Panic mortise lock – 1 point
3. Standard mortise lock – 3 point
4. Electric lock
5. Normally closed (NC)
6. Normally open (NO)



HINGES

1. Three-wing hinges
2. Rollenband hinges



* With limitations in regards to available dimension configurations.

** Available only for single-leaf doors. Max dimensions: 1375x2515 mm.

*** Available for door leaves up to: 130 kg of weight and 1100 mm of width.

ALUFIRE

**fire - resistant aluminium joinery
glazing systems**

